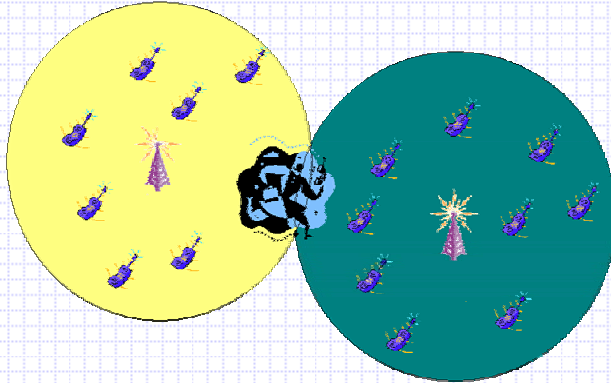


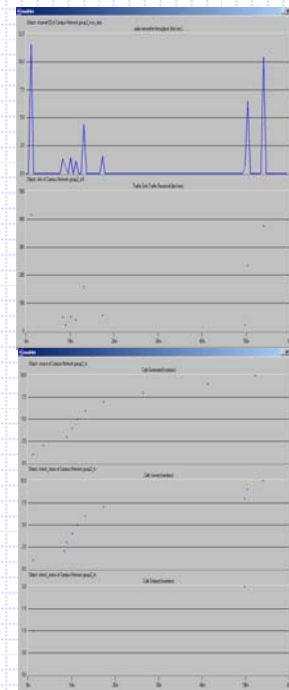
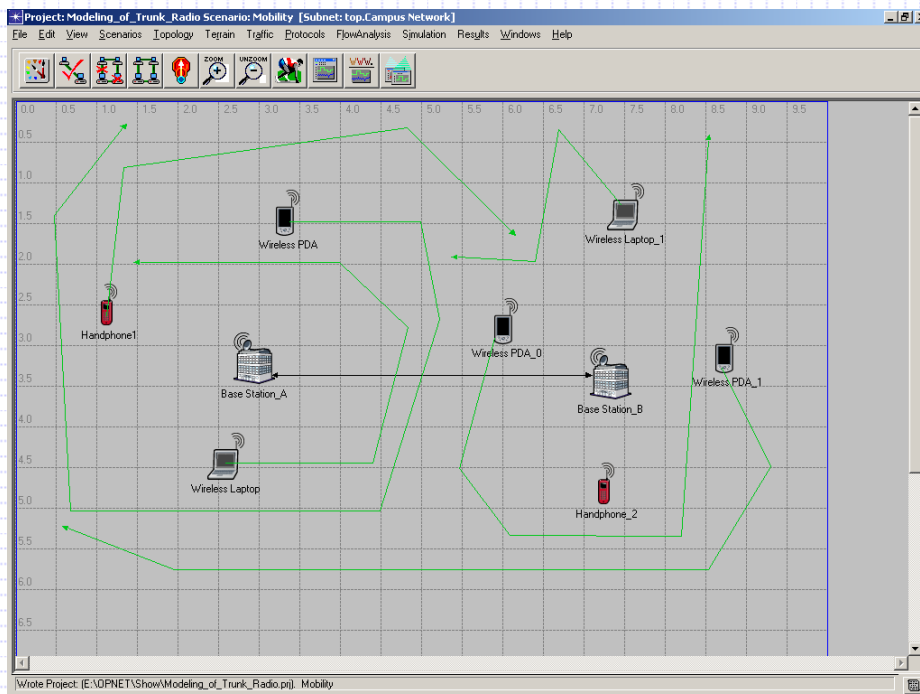


Modeling of Trunk Radio Using OPNET



TETRA (Terrestrial Trunked Radio) is a digital, trunked radio standard for the most demanding professional mobile radio users. The objective of this project is to analyze system performance of TETRA in a Wireless Environment via Computer simulation using OPNET simulation tool.

It involves simulation modeling, performance evaluation criteria and performance analysis. OPNET will be used to implement radio features, handoff mechanism, multiple access protocols and mobility models.



Achievements

Demo of Trunk Radio voice models with/without mobility are implemented. We also achieve the system-level performance, for instance, throughput, delayed call number, and queuing time.