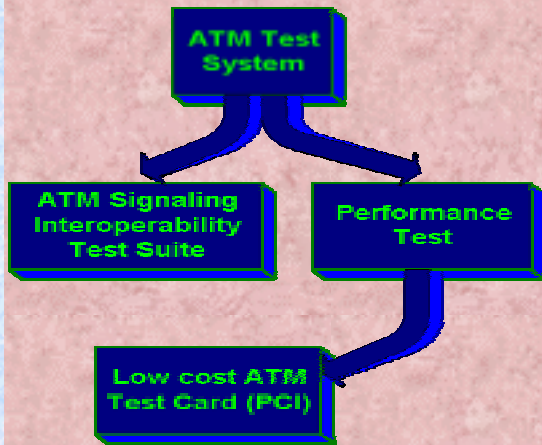


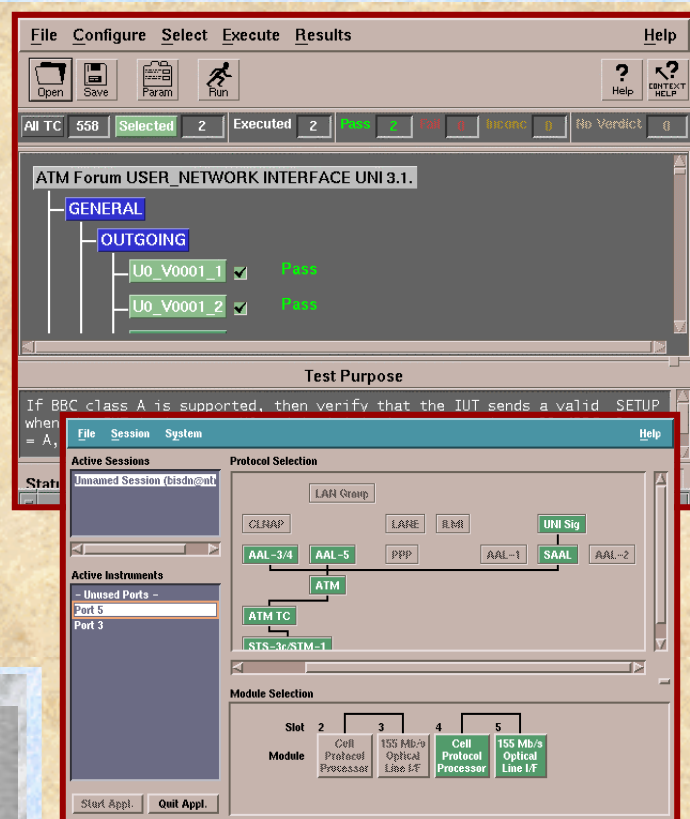


# ATM Test System



This project is an effort to develop the necessary test tools for equipment to be connected to Singapore-ONE's and SingAREN's backbone ATM switches.

For the Interoperability Test Suite, the focus is on testing ATM UNI (User-Network Interface) signalling, based on the ATM Forum's ATM UNI 3.1 Signalling Specification. The outcome for the test may be "Pass", "Fail" or "Inconclusive". The test suite was developed in collaboration with SingAREN.



The project involves the development of a flexible, efficient and inexpensive analyser card and related test software. The analyser card provides an OC-3C interface to connect to an ATM network. The software provides flexible ways to operate the analyser card, analyse the raw captured data and calculate the QoS parameters.

Project Team: Dr. Habib Mir Hosseini  
Ms. Vidhya Subramanian

Mr. Li Xin  
Mr. Deng Qi

Ms. Yee Poh Cheng (SingAREN)