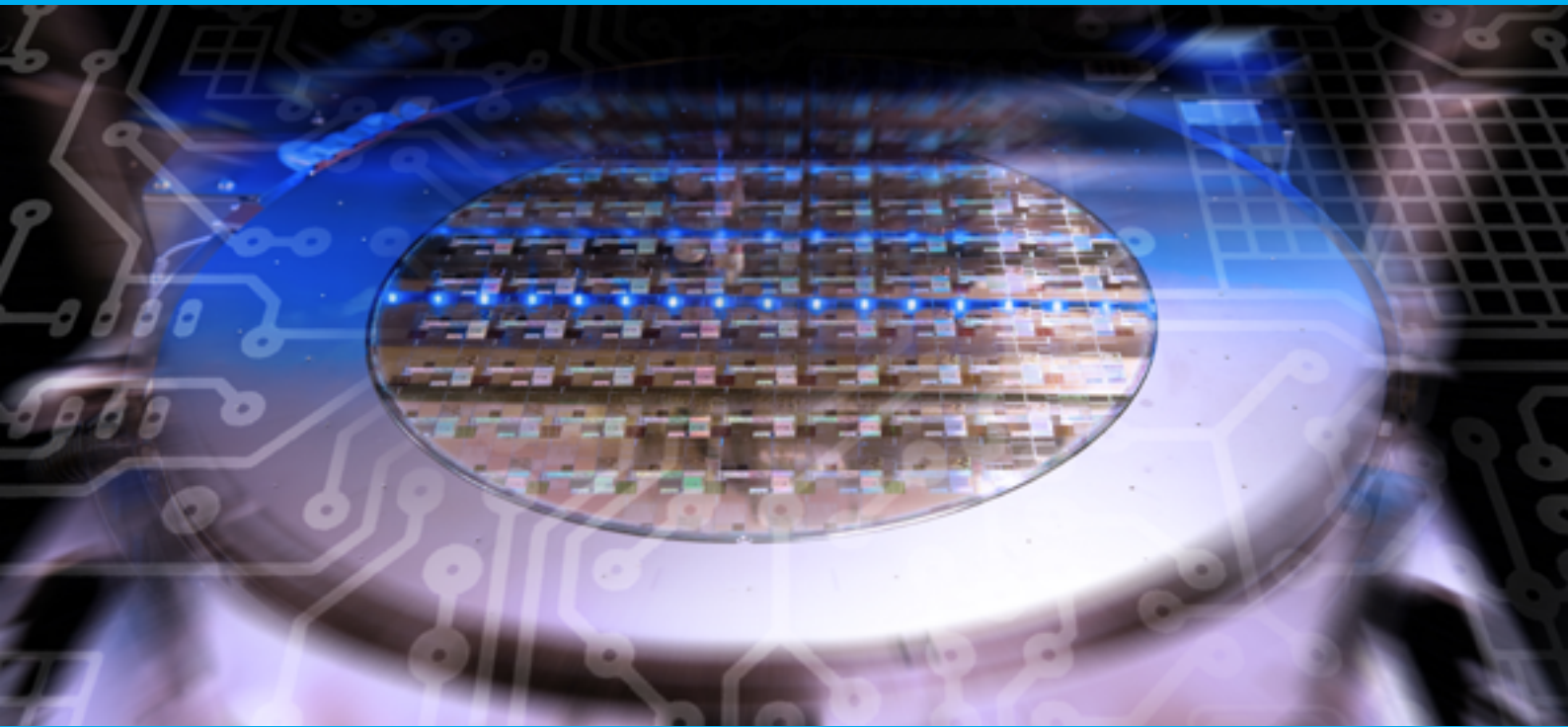


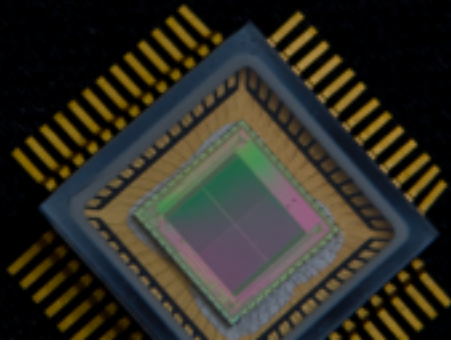
WDA-NTU Integrated Circuit Design-Professional (ICD-PRO)



The WDA-NTU Integrated Circuit Design – Professional (ICD-PRO) is a joint programme by NTU Centre for Continuing Education (CCE), NTU VIRTUS IC Design Centre of Excellence (VIRTUS) and the Singapore Workforce Development Agency (WDA).

ICD-PRO is a 9-month intensive practical training to better prepare you for the ICD profession. Companies often find scarcity in the number of engineers who are both knowledgeable and have practical experiences in the entire ICD cycle. ICD-PRO aims to breach this gap by bringing participants through an entire process of ICD cycle with practical hands-on IC chip design, fabrication, measurement and testing of the end product. A unique feature of ICD-PRO is it allows the company-sponsored participant to work on an actual industrial/company-based project under the guidance of VIRTUS's professors. The resultant Intellectual Property (IP) belongs to the company, benefitting the sponsoring company.

The objective of ICD-PRO is to build a pipeline of proficient ICD Professionals for the Semiconductor and Electronics industry.



Why ICD-PRO?

- Participants will experience a practical hands-on IC chip design cycle
- Participant's ICD will go through an actual high cost chip fabrication process
- Guidance and supervision by NTU Professors
- Intellectual Property (IP) of the end product will belong to the company
- Eligible participants are entitled to S\$25,000 WDA funding on course fee

Programme Duration

This programme comprises of 3 distinct training phases (excluding project selection and closure). The phases are:

- Phase 1 – Technical Modules
- Phase 2A – Chip Design - 6 months
- Phase 2B – Measurement & Characterisation - 3 months

The entire course will last 9 months. For the first 6 months (phase 1 and Phase 2A), participants are required full-time to attend the technical modules and work on the industry-related projects under the supervision of NTU Professors in VIRTUS Centre. For the last 3 months (Phase 2B), participants are allowed to work part-time (during evenings or weekends) to complete their troubleshooting, testing and measurements of their fabricated chip.

The first intake will be in the first quarter of 2013.

Upon completion

1. Certificate of completion
2. Subject to approval, candidates who have successfully completed this programme and are interested to pursue postgraduate degree programmes in EEE can apply for waiver of up to two courses

For Whom

The ICD PRO Programme aims to upgrade the knowledge and skills of professionals in the Electronics industry.

1. Professionals who are currently employed in the Electronics industry and seeking to upgrade their Integrated Circuit Design (ICD) skills; and
2. Professionals currently employed in the Electronics industry and are seeking to acquire Integrated Circuits Design (ICD) skills and switch fields within the Electronics industry

Applicants must have completed at least a Bachelor's degree or its equivalent in areas of Electrical/Electronic Engineering from a university.

Programme Fee

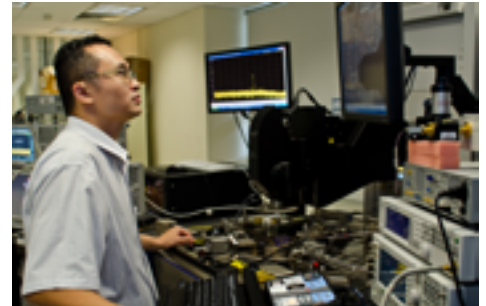
Programme Fee per Trainee: \$48,150 (including GST)

Programme Fee after WDA Subsidy: \$21,400* (including GST)

*Terms and Conditions apply

Visit our website for more details.

S\$25k
WDA funding
per pax



For further enquiry, contact us:

**NTU Centre for
Continuing Education**

Tel: +65 6790 4212

Email: cce@ntu.edu.sg

www.ntu.edu.sg/cce