

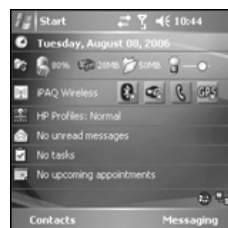
NTU Outlook Mobile Access – Configuring ActiveSync on Mobile 5 for Direct Push Email for International Roaming

Windows Mobile 5.0 device with **Messaging and Security Feature Pack (MSFP)** allows you to get notified and receive always up-to-date e-mails from your NTU mailbox while on the move around the world – automatically and instantly too.

To get started on Mobile 5.0 (with MSFP) ActiveSync for International Roaming:

Step 1 – What You'll Need


a. First configure your Mobile 5.0 for Direct Push Email using Help Sheet **NTU Outlook Mobile Access - Configuring ActiveSync on Mobile 5 for Direct Push Email using GPRS**



b. You have subscribed to GPRS data **International Roaming** services from a mobile operator like Starhub, etc.

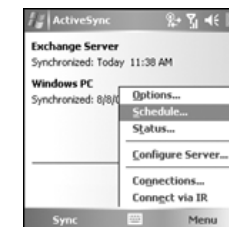
NOTE: GPRS usage is usually charged based on data traffic i.e. cost per kb. Please check out these international

roaming rates from your mobile operator

c. Turn on GPRS and verify you're connected  to your operator's overseas roaming partner GPRS network

Step 2 – Configuring ActiveSync on Your Mobile 5.0 for International Roaming

a. On your Mobile 5.0 go to **Start > Programs > ActiveSync**



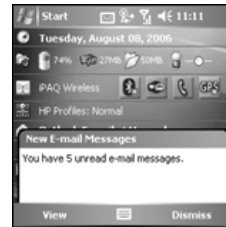
b. On **Menu** choose **Schedule**

c. Check **Use above settings when roaming**

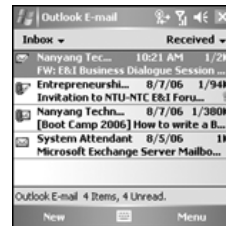


Click **Ok** to complete the configuration

d. If properly setup, new mails received in your NTU mailbox are automatically synced to your Mobile 5.0, whenever and wherever you are




e. You can read, reply or delete emails, browse or add new acquaintances to your contacts list entries and even manage your calendar appointments or tasks from your Mobile 5.0 – which are automatically kept “in-sync” or reconciled with your NTU mailbox back home wirelessly




Getting Help

If need to, our Helpdesk can be reached through the following channels:

 Hotline: **065- 6790 HELP(4357)** and press "9" to talk to our operators. (manned daily from 7:00am to 11:00pm SINGAPORE TIME GMT+8)

 Website: **<http://helpdesk.ntu.edu.sg/>**

 E-mail: **helpdesk@ntu.edu.sg**

 Fax: **065-6792 7892**

Version 200608010