

# NTU scientists discover new way to promote insulin production in pre-diabetes phase

8:48 November 16, 2019

Nanyang Technological University, Singapore (NTU Singapore) scientists have discovered that a type of immune cell known as 'pancreatic islet macrophages' is capable of promoting insulin production during the pre-diabetes phase.

The scientists believe that the macrophages could be harnessed through new targeted treatments to help prevent Type 2 pre-diabetic patients from turning fully diabetic. Macrophages were not previously known to produce or regulate insulin, and had often been overlooked in diabetes research.

Working with an international team of scientists, the five-year study was led by **Assistant Professor Yusuf Ali** from NTU's Lee Kong Chian School of Medicine. He wanted to investigate pre-diabetes research due to the general lack of awareness, understanding, and diagnoses for the condition.

"There are currently more than 300,000 people in Singapore and many more around the world who are living and coping with Type 2 diabetes," Asst Prof Ali said. "However, even more people are living in the pre-diabetes phase and if we could detect it early, it would be much easier to reverse any negative progression of the condition."

The study was published in the peer-reviewed journal, *American Journal of Physiology – Endocrinology and Metabolism*, and is supported by the Singapore Eye Research Institute (SERI), which provided the advanced imaging equipment for the research.

## Macrophages – the key to increase insulin production

Located in various organs such as the heart, lungs, and liver, macrophages are large, specialised cells that identify, envelope and even destroy certain cells. Pancreatic islet macrophages reside closely to "beta cells" in the pancreas – key cells responsible for the synthesis and secretion of the hormone insulin, which regulates blood sugar levels.

In pre-diabetic patients, cells in the muscles, body fat and liver start resisting the signals from insulin to remove glucose from the bloodstream, and the beta cells by increasing insulin secretion. This is further supported by an increase in the mass and number of beta cells in a process called 'islet remodelling'.

Asst Prof Ali and his team used pre-diabetes mice models as well as human insulin-producing cell preparations in the laboratory, to show that the findings are translatable for humans. This was conducted in accordance with Singapore's research ethical permits and reporting guidelines.

Over the course of 16 weeks, macrophages near beta cells multiplied through cell division. When the scientists removed this subset of macrophages, islet remodelling and insulin levels fell, causing a transition from the pre-diabetes phase into full Type 2 diabetes.

The scientists believe the results indicate that pancreatic islet macrophages could be successfully manipulated through new targeted treatments during the pre-diabetes phase, in order to increase the supply of insulin secretion and reduce the progression of the pre-diabetes phase.

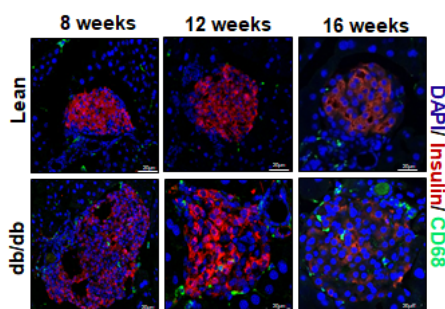
“The pre-diabetes phase varies from individual to individual. Some get pre-diabetes in a matter of months and develop full blown diabetes, while others live with pre-diabetes for years. Building on our discovery, we now hope to fully uncover the role islet macrophages play and hopefully find ways to delay or reverse the progression of diabetes,” said Asst Prof Ali.

**Dr Daniel Chew, Head & Senior Consultant, Department of Endocrinology at Tan Tock Seng Hospital**, who is not involved in the study, said, “In the course of development of Type 2 diabetes, initially insulin secreting beta cells respond to the challenge of insulin resistance by producing more insulin, but later they ‘fail’ and produce less insulin. This research explores a novel mechanism for the compensatory phase of this phenomenon, sometimes called Starling’s Law of the pancreas. The investigators have demonstrated the importance of vascular remodelling of the pancreatic islets in which the beta cells reside and provide strong evidence that it is aided by resident macrophages (immune regulatory cells). Further elucidation of the mechanism by which macrophages enhance beta cell function could lead to novel therapies for prevention and treatment of Type 2 diabetes.”

The NTU team aims to conduct deeper research in macrophage subsets, to spur better targeted drugs and treatments for pre-diabetic patients to potentially reverse their ailment.

Acknowledging the support of the research agencies in Singapore and individuals who donated their bodies to science after they had passed away, Asst Prof Ali said, “We took years to validate this study using human islet preparations and we are appreciative of our clinical partners SERI and SingHealth, and especially to the people who donated their organs for research.”

#### Notes to Editor:



An image taken from a microscope which shows an increase in number of macrophages (green) near beta cells (purple) over eight weeks. The NTU-led study also showed that the macrophages could be harnessed through new targeted treatments to help prevent Type 2 pre-diabetic patients from turning fully diabetic.

Paper (<https://www.physiology.org/doi/abs/10.1152/ajpendo.00248.2019>) titled “Islet macrophages are associated with islet vascular remodeling and compensatory hyperinsulinemia during diabetes”, published in American Journal of Physiology – Endocrinology and Metabolism on 1 Oct 2019.

#### About Nanyang Technological University, Singapore

A research-intensive public university, Nanyang Technological University, Singapore (NTU Singapore) has 33,000 undergraduate and postgraduate students in the Engineering, Business, Science, Humanities, Arts, & Social Sciences, and Graduate colleges. It also has a medical school, the Lee Kong Chian School of Medicine, set up jointly with Imperial College London. NTU is also home to world-class autonomous institutes – the National Institute of Education, S Rajaratnam School of International Studies, Earth Observatory of Singapore, and Singapore Centre for Environmental Life Sciences Engineering – and various leading research centres such as the Nanyang Environment & Water Research Institute (NEWRI) and Energy Research Institute @ NTU (ERI@N). Ranked 11th in the world, NTU has been placed the world’s top young university for the past six years. The University’s main campus is frequently listed among the Top 15 most beautiful university campuses in the world and it has 57 Green Mark-certified (equivalent to LEED-certified) building projects, of which 95% are certified Green Mark Platinum. Apart from its main campus, NTU also has a campus in Novena, Singapore’s healthcare district. For more information, visit [www.ntu.edu.sg](http://www.ntu.edu.sg)

Share on:



or:

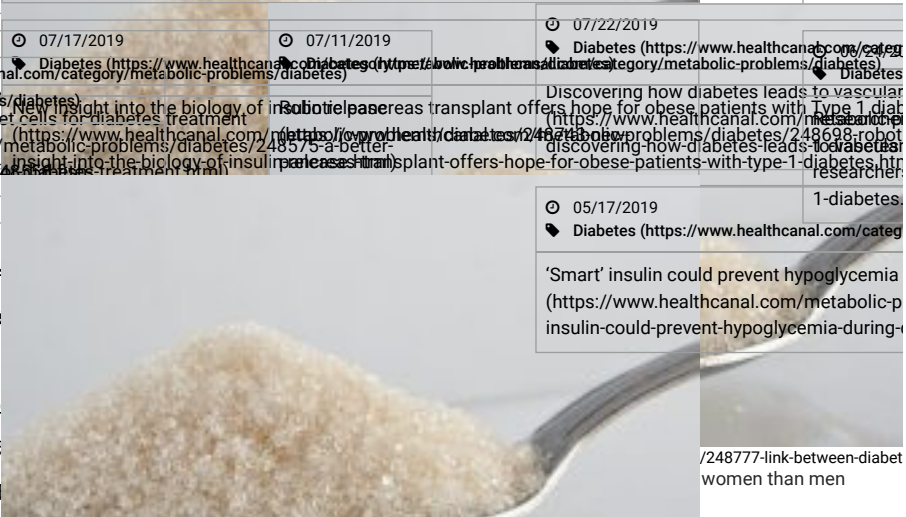
Our Newsletter

(https://www.healthcanal.com/metabolic-problems/diabetes/249518-landmark-drug-trial-which-reveals-new-way-to-treat-type-1-diabetes.html)

u=https%3A%2F%2Fwww.healthcanal.com%2Fmetabolic-problems%2Fdiabetes%2F249518-landmark-drug-trial-which-reveals-new-way-to-treat-type-1-diabetes.html%3Futm\_source=stumbleupon%26utm\_medium=referral%26utm\_campaign=stumbleupon%26utm\_content=stumbleupon

MORE FROM DIABETES

<p>11/16/2019 Diabetes (https://www.healthcanal.com/metabolic-problems/diabetes/249518-landmark-drug-trial-which-reveals-new-way-to-treat-type-1-diabetes.html)</p> <p>06/19/2019 Diabetes (https://www.healthcanal.com/metabolic-problems/diabetes/248777-link-between-diabetic-women-than-men)</p>	<p>08/28/2019 Diabetes (https://www.healthcanal.com/category/metabolic-problems/diabetes)</p> <p>07/17/2019 Diabetes (https://www.healthcanal.com/category/metabolic-problems/diabetes)</p>	<p>09/25/2019 Diabetes (https://www.healthcanal.com/category/metabolic-problems/diabetes)</p> <p>07/11/2019 Diabetes (https://www.healthcanal.com/category/metabolic-problems/diabetes)</p>	<p>09/10/2019 Diabetes (https://www.healthcanal.com/category/metabolic-problems/diabetes)</p> <p>07/22/2019 Diabetes (https://www.healthcanal.com/category/metabolic-problems/diabetes)</p>	<p>09/06/2020 Diabetes (https://www.healthcanal.com/category/metabolic-problems/diabetes)</p> <p>05/17/2019 Diabetes (https://www.healthcanal.com/category/metabolic-problems/diabetes)</p>
<p>LANDMARK DRUG TRIAL WHICH REVEALS NEW WAY TO TREAT TYPE 1 DIABETES (https://www.healthcanal.com/metabolic-problems/diabetes/249518-landmark-drug-trial-which-reveals-new-way-to-treat-type-1-diabetes.html)</p>	<p>Popular Pain Medication Associated with Greater Risk of Hypoglycemia (https://www.healthcanal.com/metabolic-problems/diabetes/248968-popular-pain-medication-associated-with-greater-risk-of-hypoglycemia.html)</p>	<p>Scientists Identify Potential Way to Prevent Type 1 Diabetes (https://www.healthcanal.com/metabolic-problems/diabetes/248698-robot-discovering-how-diabetes-leads-to-vascular-disease.html)</p>	<p>Discovering how diabetes leads to vascular disease (https://www.healthcanal.com/metabolic-problems/diabetes/248698-robot-discovering-how-diabetes-leads-to-vascular-disease.html)</p>	<p>With trial of better control of type 2 disease (https://www.healthcanal.com/metabolic-problems/diabetes/248698-robot-discovering-how-diabetes-leads-to-vascular-disease.html)</p>



/248777-link-between-diabetic-women-than-men

HEALTH NEWS

Blood, Heart and Circulation (https://www.healthcanal.com/category/blood-heart-circulation), Mental Health and Behavior (https://www.healthcanal.com/category/mental-health-behavior), Lungs and Breathing (https://www.healthcanal.com/category/lungs-breathing), Eyes and Vision (https://www.healthcanal.com/category/eyes-vision)

<p>11/16/2019 Mental Health and Behavior (https://www.healthcanal.com/category/mental-health-behavior)</p> <p>11/11/2019 Depression (https://www.healthcanal.com/category/mental-health-behavior)</p>	<p>11/16/2019 Lungs and Breathing (https://www.healthcanal.com/category/lungs-breathing)</p> <p>11/14/2019 Lungs and Breathing (https://www.healthcanal.com/category/lungs-breathing)</p>	<p>11/16/2019 Eyes and Vision (https://www.healthcanal.com/category/eyes-vision)</p> <p>11/12/2019 Eyes and Vision (https://www.healthcanal.com/category/eyes-vision)</p>	<p>11/16/2020 Eyes and Vision (https://www.healthcanal.com/category/eyes-vision)</p>
<p>Link between inflammation and mental sluggishness shown in new study (https://www.healthcanal.com/mental-health-behavior/249541-link-between-inflammation-and-mental-sluggishness-shown-in-new-study.html)</p> <p>Strong link found between level of depression and heart disease (https://www.healthcanal.com/mental-health-behavior/depression/249471-strong-link-found-between-level-of-depression-and-heart-disease-linked-to-stroke.html)</p>	<p>Yale study provides insights into COPD (https://www.healthcanal.com/lungs-breathing/249506-could-symptoms-of-copd-be-linked-to-leading-cause-of-blindness-in-elderly.html)</p> <p>Antibody-based eye drops show promise for treating dry-eye disease (https://www.healthcanal.com/eyes-vision/249221-antibody-based-eye-drops-show-promise-for-treating-dry-eye-disease.html)</p>	<p>Yale researchers find cause of blindness in elderly (https://www.healthcanal.com/eyes-vision/249338-yale-researchers-find-cause-of-blindness-in-elderly.html)</p> <p>Antibody-based eye drops show promise for treating dry-eye disease (https://www.healthcanal.com/eyes-vision/249221-antibody-based-eye-drops-show-promise-for-treating-dry-eye-disease.html)</p>	<p>Antibody-based eye drops show promise for treating dry-eye disease (https://www.healthcanal.com/eyes-vision/249221-antibody-based-eye-drops-show-promise-for-treating-dry-eye-disease.html)</p>

Bionic pacemaker slows progression of heart failure (https://www.healthcanal.com/blood-heart-circulation/heart-disease/249490-bionic-pacemaker-slows-progression-of-heart-failure.html)

New Way of Measuring White Blood Cell Function Offers Better Insights to Help Patients with Sepsis (https://www.healthcanal.com/blood-heart-circulation/249473-new-way-of-measuring-white-blood-cell-function-offers-better-insights-to-help-patients-with-sepsis.html)

NEWS SECTIONS

Diseases & Conditions

Footer text containing various statistics and percentages.

Blood, Heart and Circulation (<https://www.healthcanal.com/category/blood-heart-circulation>)  
 Bones and Muscles (<https://www.healthcanal.com/category/bones-muscles>)  
 Brain and Nerves (<https://www.healthcanal.com/category/brain-nerves>)  
 Cancers (<https://www.healthcanal.com/category/cancers>)  
 Digestive System (<https://www.healthcanal.com/category/digestive-system>)  
 Disorders and Conditions (<https://www.healthcanal.com/category/disorders-conditions>)  
 Genetics and Birth Defects (<https://www.healthcanal.com/category/genetics-birth-defects>)  
 Infections (<https://www.healthcanal.com/category/infections>)  
 Lungs and Breathing (<https://www.healthcanal.com/category/lungs-breathing>)  
 Mental Health and Behavior (<https://www.healthcanal.com/category/mental-health-behavior>)  
 Metabolic Problems (<https://www.healthcanal.com/category/metabolic-problems>)  
 Nutrition (<https://www.healthcanal.com/category/nutrition>)

## Medical Specialties

Child health (<https://www.healthcanal.com/category/child-health>)  
 Cosmetic Surgery (<https://www.healthcanal.com/category/cosmetic-surgery>)  
 Ear, Nose and Throat (<https://www.healthcanal.com/category/ear-nose-throat>)  
 Eyes and Vision (<https://www.healthcanal.com/category/eyes-vision>)  
 Female Reproductive (<https://www.healthcanal.com/category/female-reproductive>)  
 Geriatrics and Aging (<https://www.healthcanal.com/category/geriatrics-aging>)  
 Hematology (<https://www.healthcanal.com/category/hematology>)  
 Immune System (<https://www.healthcanal.com/category/immune-system>)  
 Kidneys and Urinary System (<https://www.healthcanal.com/category/kidneys-urinary-system>)  
 Male Reproductive (<https://www.healthcanal.com/category/male-reproductive>)  
 Oral and Dental Health (<https://www.healthcanal.com/category/oral-dental-health>)  
 Palliative Care (<https://www.healthcanal.com/category/palliative-care>)  
 Pregnancy and Childbirth (<https://www.healthcanal.com/category/pregnancy-childbirth>)  
 Sexual Health (<https://www.healthcanal.com/category/sexual-health>)  
 Skin, Hair and Nails (<https://www.healthcanal.com/category/skin-hair-nails>)  
 Sports Medicine (<https://www.healthcanal.com/category/sports-medicine>)  
 Surgery and Rehabilitation (<https://www.healthcanal.com/category/surgery-rehabilitation>)

## Paramedical

Alternative Therapies (<https://www.healthcanal.com/category/alternative-therapies>)  
 Drugs Approvals and Trials (<https://www.healthcanal.com/category/drugs-approvals-trials>)  
 Environmental Health (<https://www.healthcanal.com/category/environmental-health>)  
 Health Informatics (<https://www.healthcanal.com/category/health-informatics>)  
 Legal and Regulatory (<https://www.healthcanal.com/category/legal-and-regulatory>)  
 Life style and Fitness (<https://www.healthcanal.com/category/life-style-fitness>)  
 Medical Breakthroughs (<https://www.healthcanal.com/category/medical-breakthroughs>)  
 Public Health and Safety (<https://www.healthcanal.com/category/public-health-safety>)  
 Substance Abuse (<https://www.healthcanal.com/category/substance-abuse>)

insulin-insulin-  
 production-production-  
 (child\_cat\_list)

# HEALTH

(<https://www.healthcanal.com>)

## Medical News

HealthCanal.com is a premier online Health News write / Medical Research News write service provider with our primary focus is to cover the latest happenings from the dynamic world of Health and Medicine to help you keep.

## Company

-  About us (<https://www.healthcanal.com/about-us>)
-  Upcoming Events (<https://www.healthcanal.com/events>)
-  Advertise (<https://www.healthcanal.com/advertise>)
-  RSS ([https://www.healthcanal.com/health\\_news\\_rss\\_feeds-html](https://www.healthcanal.com/health_news_rss_feeds-html))
-  Donate (<https://www.healthcanal.com/donate>)
-  Contact us (<https://www.healthcanal.com/contact-us>)

## Find Us at Social Media

(<https://www.healthcanal.com/blog/healthcanal>)

news-

SUBSCRIBE TO HEALTH NEWS

news  
ENTER YOUR E-MAIL

healthcanal

513a4332  
© 2016 HEALTHCANAL - Medical News. All Rights Reserved.  
Ristretto Marketing and Consulting (<https://ristretto.agency>)

Designed and developed by [Privacy Policy \(https://www.healthcanal.com/privacy-policy\)](https://www.healthcanal.com/privacy-policy)