

Singapore's New Nano-Satellite Doubles Orbital Time - Presented by: The Aol. On Network

Enlarge Image Singapore's Nanyang Technological University has successfully launched a satellite from the International Space Station (ISS) for the first time. It's a nanosatellite that deserves special attention for its new thruster technology. These new micro-thrusters allow the satellite to remain in for space twice as long as other similar satellites, according to the university.



0 Comments **Nasdaq**

Login ▾

Recommend Share

Sort by Best ▾

Start the discussion...

Be the first to comment.

ALSO ON NASDAQ

AT&T CEO Calls for Dialogue on Racial Tensions: 'Tolerance Is for Cowards'

1 comment • 4 months ago •

Ed McAninch — Just run the business and stay out of social/political issues Stephenson. Signed, an AT&T shareholder

Wet wipes are wreaking havoc on our sewers!

1 comment • 2 months ago •

Robert — It's time for Bathroom Wet Wipes to go Bye-Bye. I use Etiquette's organic-based effective toilet paper moistener. ...

Pain Therapeutics (PTIE) Enters Oversold Territory

1 comment • 4 months ago •

Bradley Hans Stein — Yes ! considering they are going to refile with the FDA in a couple months for 2 protocols for ...

Airbus Tightens Belt With Shake-Up

1 comment • 4 months ago •

GovernmentSUxS — Things must be getting tight as the EU is coming apart at the seams.

Subscribe Add Disqus to your site Add Disqus Privacy

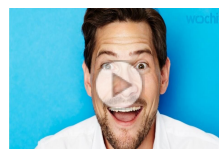
Related Videos



Zuckerberg Explains



Is Apple All It's Cracked Up



Still Can't Get A Pixel XL?



What Is Meitu? The Kawaii