

**SIGN IN** For a more personalised reading experience

My Playlist **0**

SEARCH

GET OUR NEWS

[f](#)
[t](#)
[v](#)
[m](#)
[e](#)

SINGAPORE

# Team from S'pore research centre wins US\$1m prize in bioinformatics competition


Print Email


Text Resize


POSTED: 24 Sep 2013 12:48 PM

TREND

MORE SINGAPORE NEWS

- 

Man arrested over Bedok Point vandalism case  
9 hours ago TREND
- 

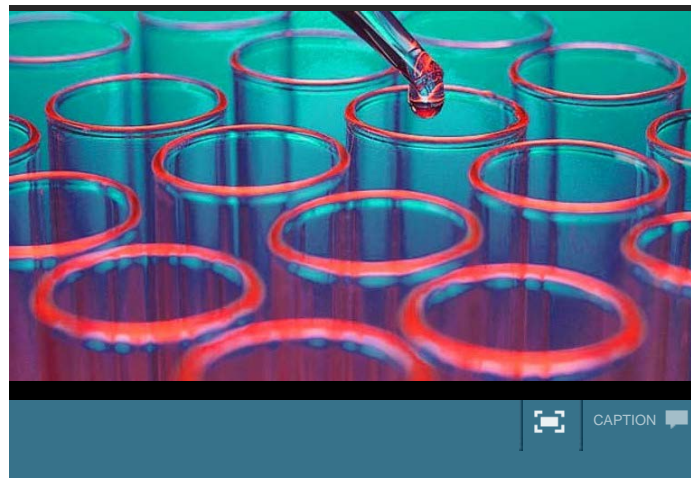
Organisations, individuals recognised for efforts to re-integrate ex-offenders  
9 hours ago TREND
- 

Collective responsibility among citizens key to successful social policies: PM Lee  
10 hours ago TREND

- [PM Lee hopes to have successor team in place before turning 70](#)
- [Four arrested on suspicion of handling money obtained in scam](#)
- ["Building trust comes from working together", says PM Lee on Singapore's social compact](#)
- [PAE honours 3 organisations and institutions for green efforts](#)

A team from the Singapore Centre on Environmental Life Sciences Engineering (SCELSE) has emerged tops in the first-ever bioinformatics competition.

PHOTOS



SINGAPORE: A team from the Singapore Centre on Environmental Life Sciences Engineering (SCELSE) and the University of Tuebingen in Germany has emerged tops in the first-ever bioinformatics competition.


It was organised by the US Department of Defense to identify organisms from a stream of DNA sequences for clues to potential biological threats.

SCELSE is a Nanyang Technological University led partnership with the National University of Singapore.

Two researchers from SCELSE -- Visiting Professor Daniel Huson from the University of Tuebingen, and post-doctoral researcher Xie Chao from the Life Sciences Institute at the National University of Singapore -- collaborated with graduate student Benjamin Buchfink

**SHARE**  
Be the first to recommend or tweet this story to your friends.

[f](#) 59
 [t](#) 15
 [in](#) 0
 [Email](#)



**FAVOURITE**  
Add to your favourites

**ADD** [View All](#)

Seize tomorrow's opportunity today with the Nanyang Institute of Management

General Management  
 Aviation & Air Transport  
 Hospitality Management  
 SME  
 Shipping  
 Port Management

 **NANYANG TECHNOLOGICAL UNIVERSITY**  
Nanyang Business School

[Click here to get an information](#)

**My Statistics** Beta

---

**SINGAPORE**  
LAST 30 DAYS

[Sign in](#) to find out your average

Site Average      Your Average

WEEKLY

We   Th   Fr   Sa   Su   Mo

Load More ▼

from the University of Tuebingen to develop an algorithm that best meet the stringent criteria laid out by the Defense Threat Reduction Agency's (DTRA's) Algorithm Challenge.

The challenge issued by DTRA, a Pentagon agency, in January 2013 attracted entries from more than 2,700 individuals from around the world.

The team clinched the US\$1 million prize in the global competition, which attracted entries from top universities and renowned research centres in the world.

A joint NTU-NUS statement said the win is a clear indication of the research team's strength and leadership role in next-generation sequencing. This includes areas such as microbial genomics, evolutionary genomics, and metagenomics.

SCElse is a S\$120 million research centre, co-funded by the Singapore government over the next 10 years under the Research Centres of Excellence (RCE) Programme.


- CNA/ac/ec


15 Mths Part Time MBA

Dimensions.edu.sg/MBA-Singapore  
UK MBA @ DIMENSIONS, No GMAT. Sep Intakes - Get Exec. MBA Kits!

My Facebook Friends

**Sign Up** Create an account or **Log In** to see what your friends are doing.

 653 people recommend this.

 **New rules to require employers to consider S'poreans fairly before hiring foreigners - Channel NewsAsia**  
642 people recommend this.

PREVIOUS STORY

More flexible use of Medisave for assisted conception



Tweet Photos, Videos and Update on this Story to #cna or SUBMIT ONLINE

NEXT STORY

Masagos to visit Semarang from Sep 24-26

HOME SINGAPORE

YOU MAY ALSO LIKE



Pace Wu to wed, confirms pregnancy (Entertainment)



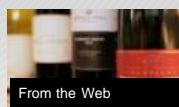
Belinda Lee hurt in car accident (Entertainment)



"Working poor" in Singapore can't make ends meet: NUS (Singapore)




From the Web  
How To Tell The Difference Between A Normal Mole Or A Malignant... (healthyMEtv)



From the Web  
Understanding Wine Labels (foodforlifetv.tv)



From the Web  
Asia's 50 best restaurants announced (HungryGoWhere)

Recommended by 

SOCIAL NEWS

POPULAR ON OUR WEBSITE



Ada Choi shaken by 'kidnapping' in China



Regrettable that BBC allowed interviewee to make baseless allegations: SPF

POPULAR ON TWITTER



Firms to consider Singaporeans fairly for jobs



Maldives Supreme Court delays presidential elections

POPULAR ON FACEBOOK



Firms to consider Singaporeans fairly for jobs



Leadership is not about being popular all the time: Aung San Suu Kyi

JUMP TO Select Section

Go to:

NEWS

TV

WATCH LIVE